

ND PSC Annual Rail Service & Stakeholders Meeting

Lydia Bjorge

DIRECTOR STATE GOVERNMENT AFFAIRS

MAY, 2019



BNSF Railway

BNSF Railway is committed to **serving our customers today** and **investing to accommodate their growth tomorrow.**

28 States Served
+3 Canadian Provinces



25
Intermodal Facilities



41,000
Employees



32,500
Route Miles



~8,000
Locomotives



~10 Million
Carloads Shipped in 2018



~400
Transload Facilities
on Network



40+
Ports Served



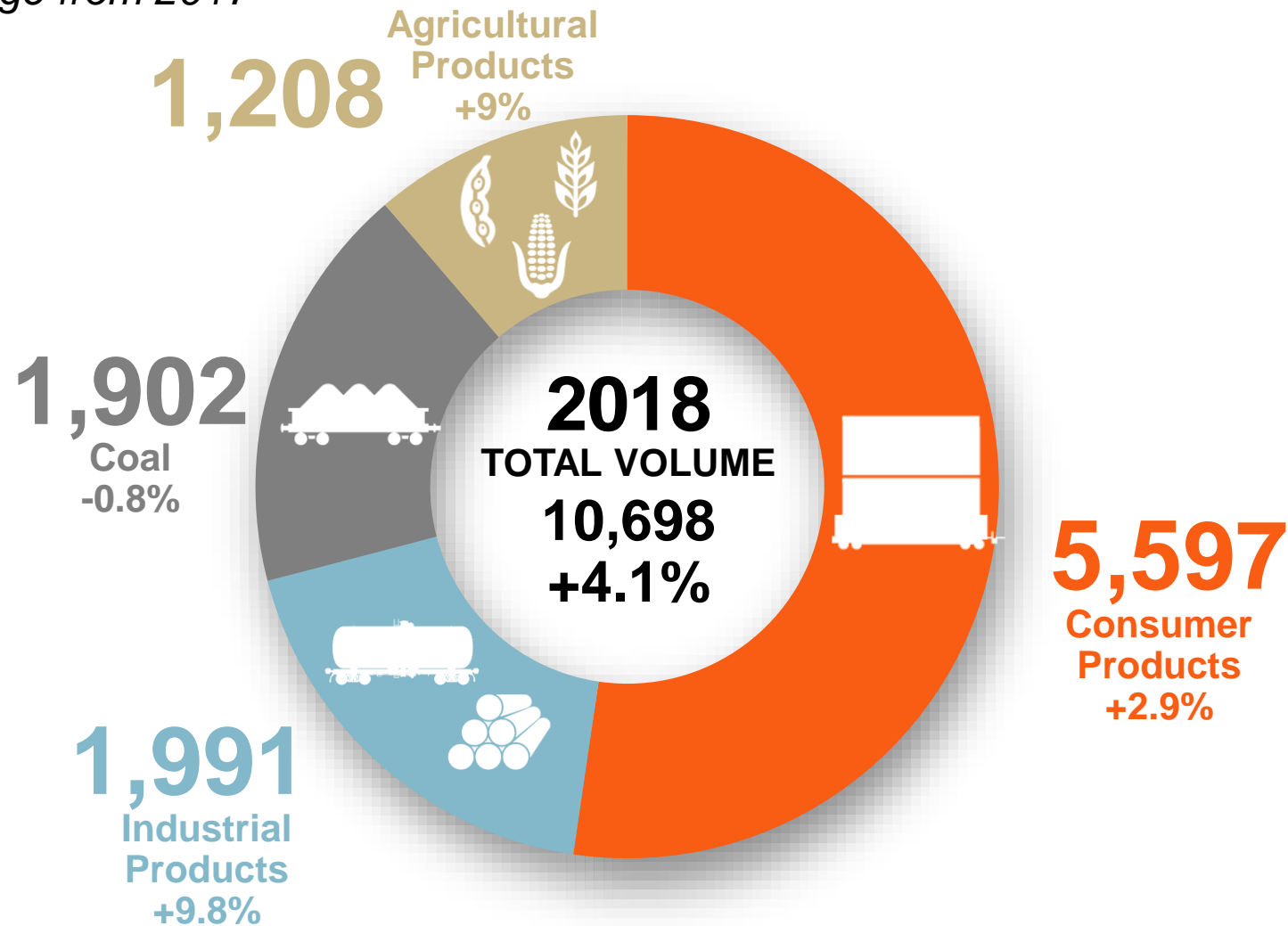
\$60+ Billion
Invested Since 2000



BNSF Volume – Full Year 2018

Total units and % change from 2017

In Thousands



BNSF in North Dakota



1,400+

Employees



1,600+

Route Miles



50

New or Expanded Facilities



~400,000

Carloads Shipped in 2018



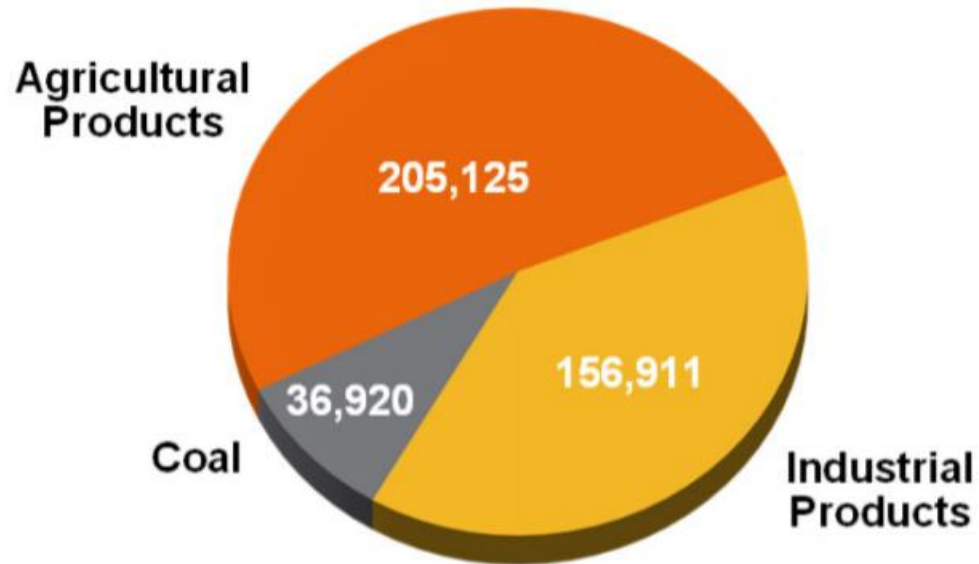
\$1.5 Billion

Invested Since 2013



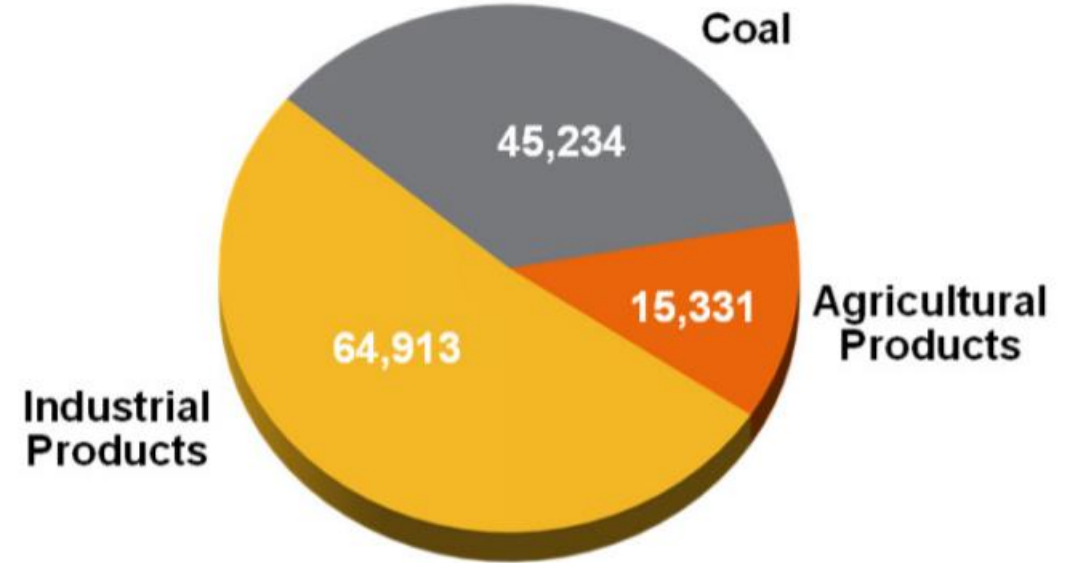
2018 ND Volumes

Products Shipped From North Dakota



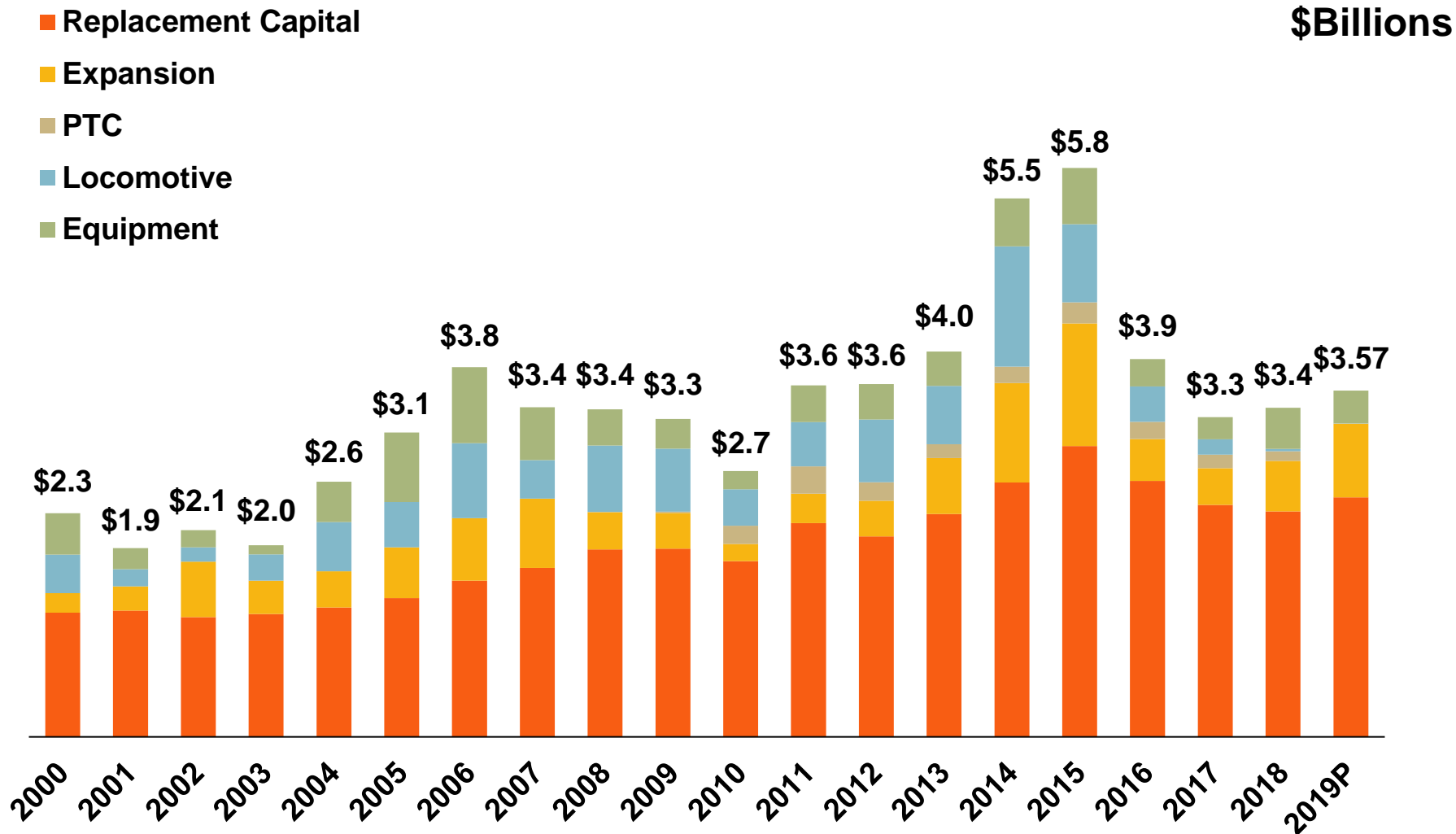
**398,956 Carloads and
Intermodal Units**

Products Shipped To North Dakota



**125,478 Carloads and
Intermodal Units**

BNSF's Capital Investments



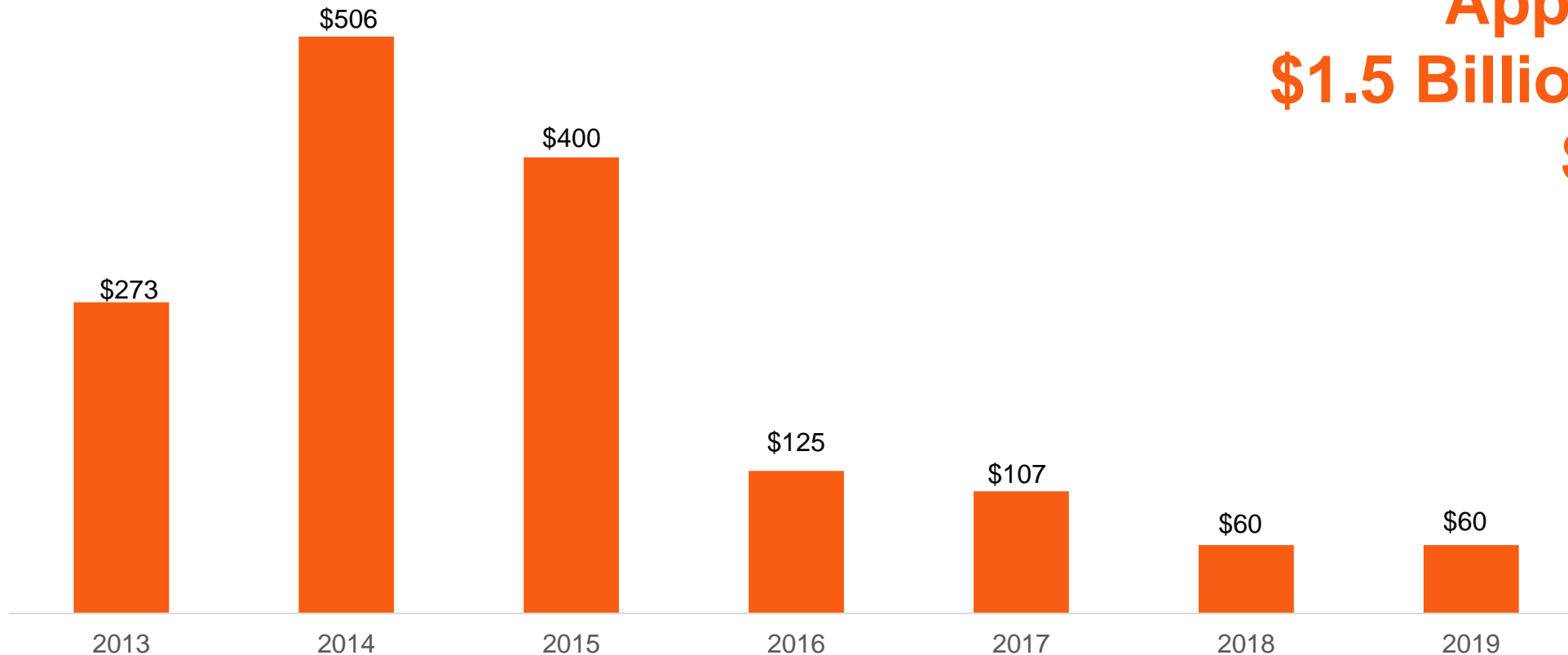
BNSF HAS MADE
NEARLY
\$65
BILLION
IN CAPITAL
INVESTMENTS
IN OUR RAILROAD
SINCE 2000.

ND Capital Spending

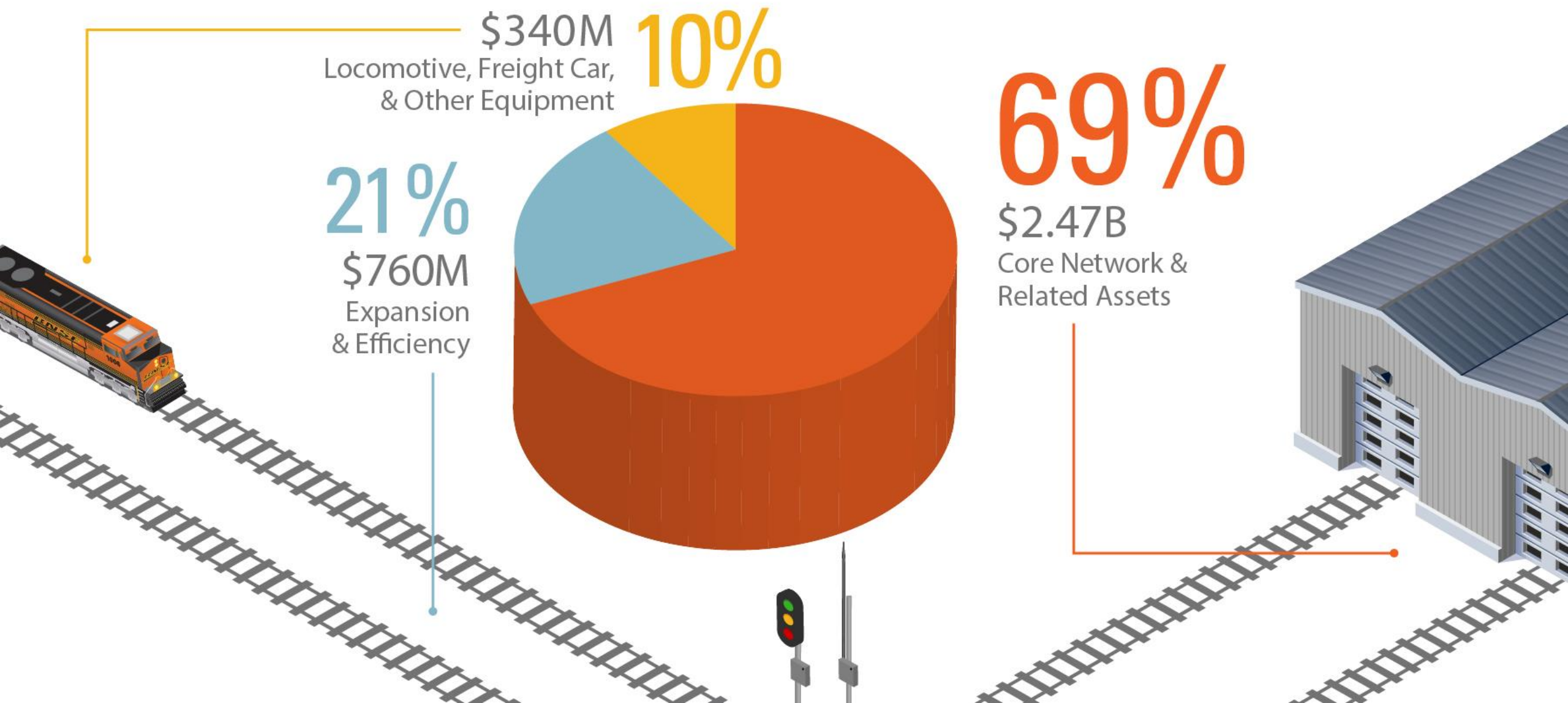


\$ Millions

**Approximately
\$1.5 Billion Invested
Since 2013**



2019 Capital Investments \$3.57B



2019 Network Maintenance



~\$2.47B



~12K

MILES OF TRACK
RESURFACING/
UNDERCUTTING

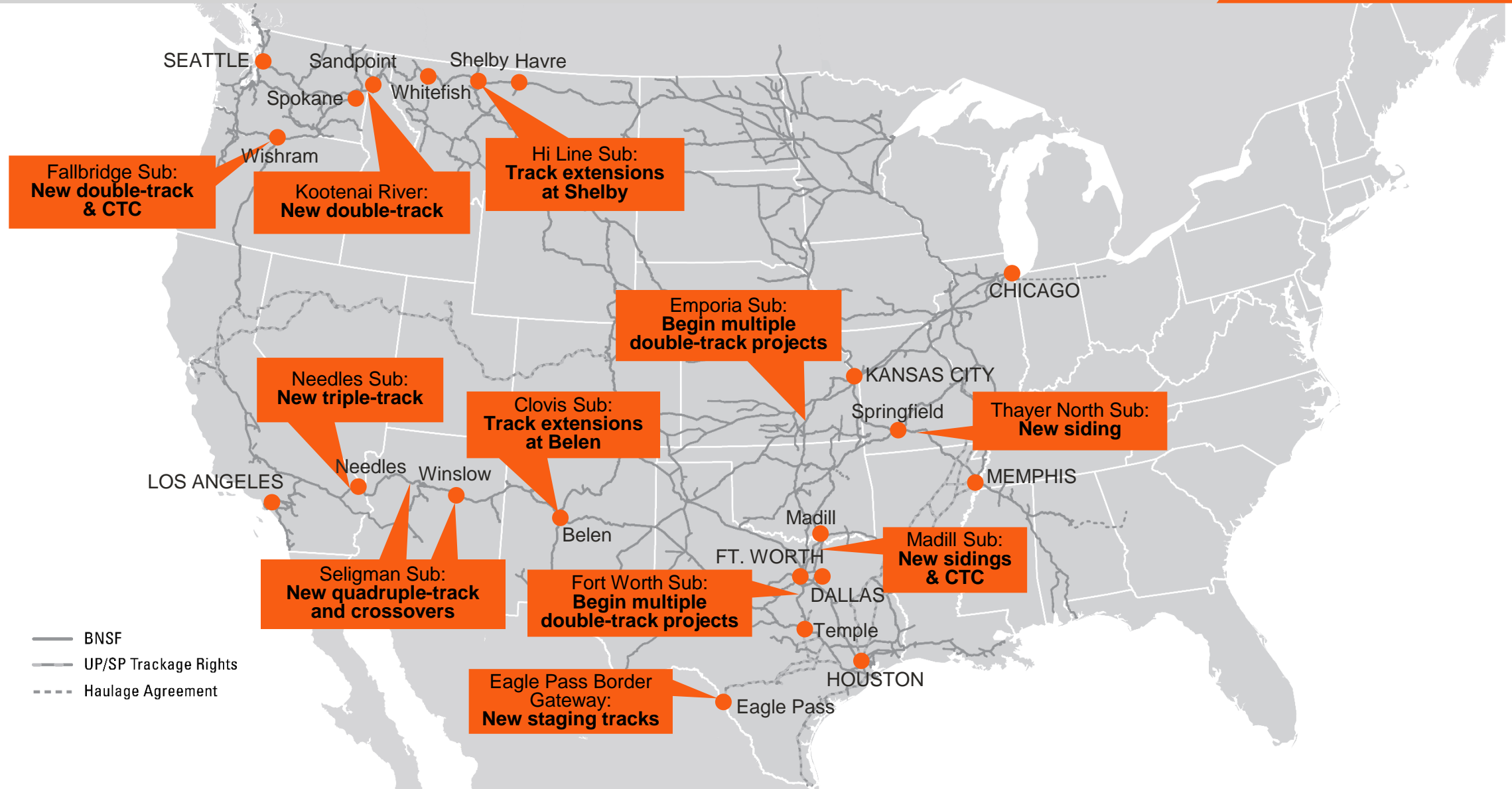
535

MILES OF RAIL
REPLACEMENT

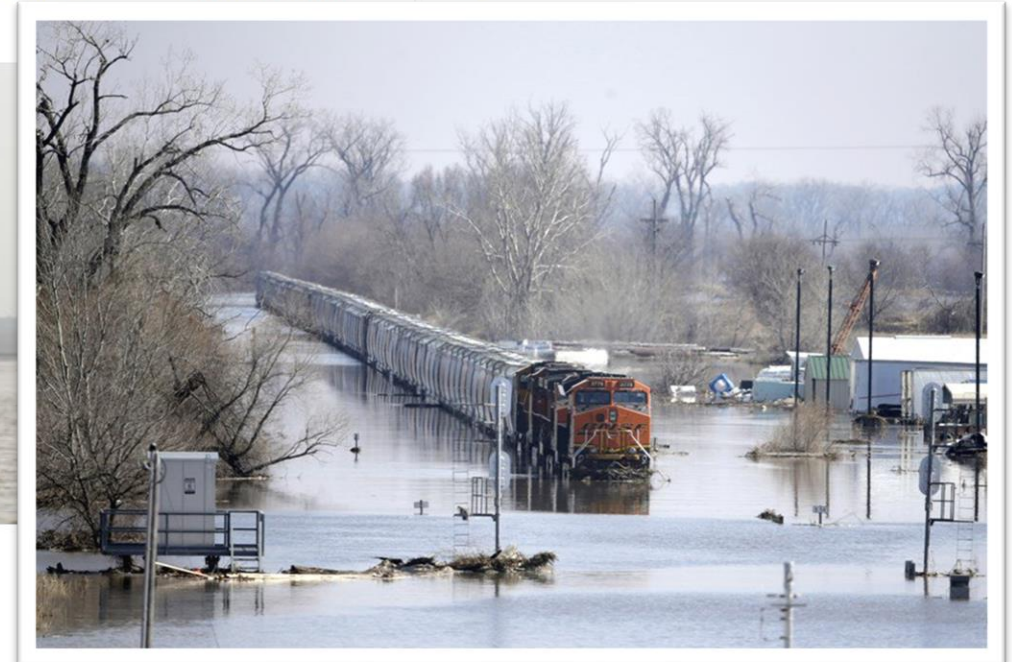
~2.3M

TIES WILL BE
REPLACED

2019 Line Expansion Projects



BNSF Flood Recover - 2019



Flooding Recovery Efforts

Major flooding across portions of Nebraska, Iowa, Kansas and Missouri is causing significant disruptions to BNSF service and operations. Due to snowmelt and excessive rainfall, water levels have reached high levels in many areas.

BNSF crews are working to restore service as quickly as possible. As always, safety is our highest priority. While some traffic is being re-routed, shipments destined for locations in this region will continue to experience delays.

Here's a [collection of photos](#) showing our flood recovery work.

BNSF Flood Recovery - 2019



Plattsmouth, Nebraska – March 22



Pacific Junction, Iowa – March 29

BNSF Flood Recovery - 2019



